

PRODUCT INFORMATION PACKET



Model No: C145T34FC45A

Catalog No: 122171.00

122171.00..3HP..3490RPM.145TC.TEFC.208-230/460.3PH.60HZ.CONT.40C.1.15SF.C
FACE.C145T34FC45.....GENERAL PURPOSE.NONE.....

Totally Enclosed Fan Cooled (TEFC)



Regal and Leeson are trademarks of Regal Beloit Corporation or one of its affiliated companies.

©2018 Regal Beloit Corporation, All Rights Reserved. MC017097E



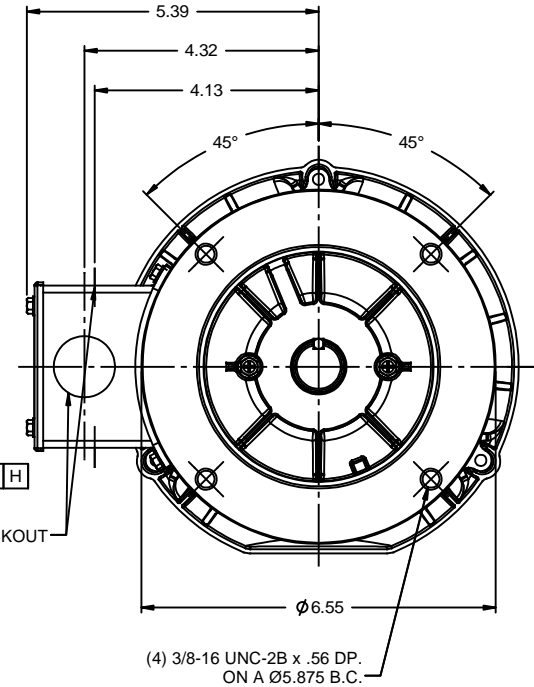
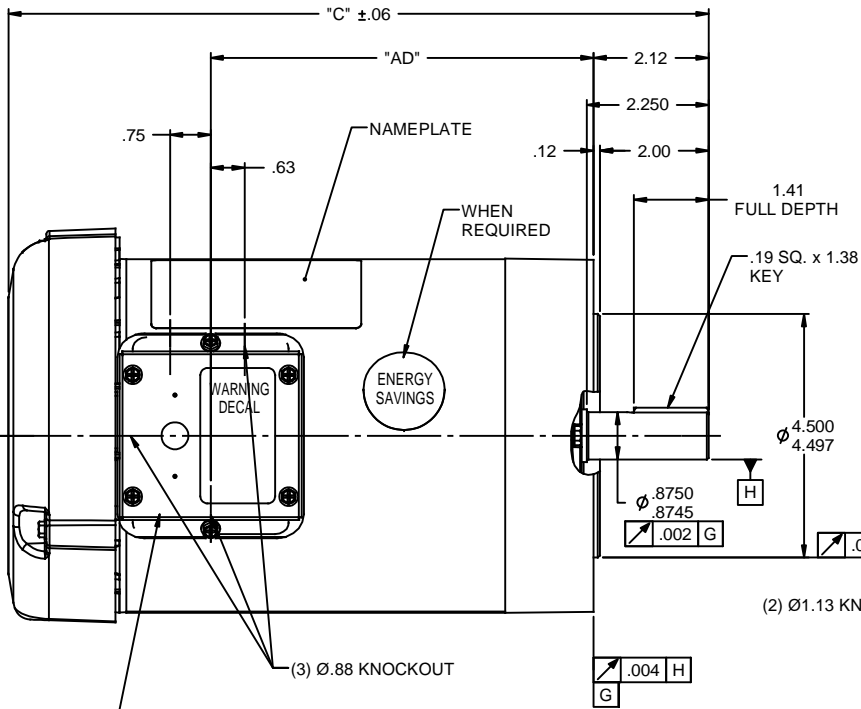
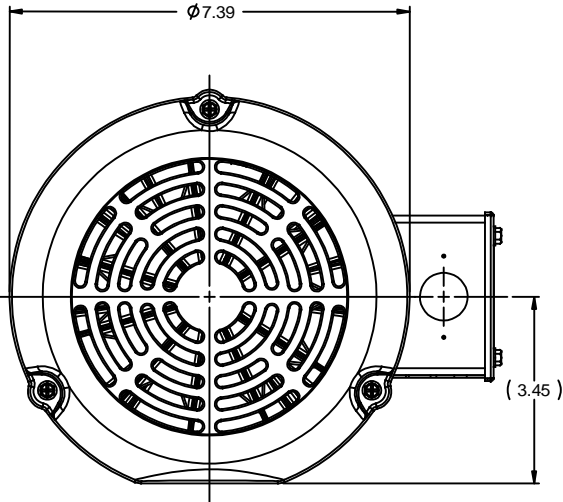
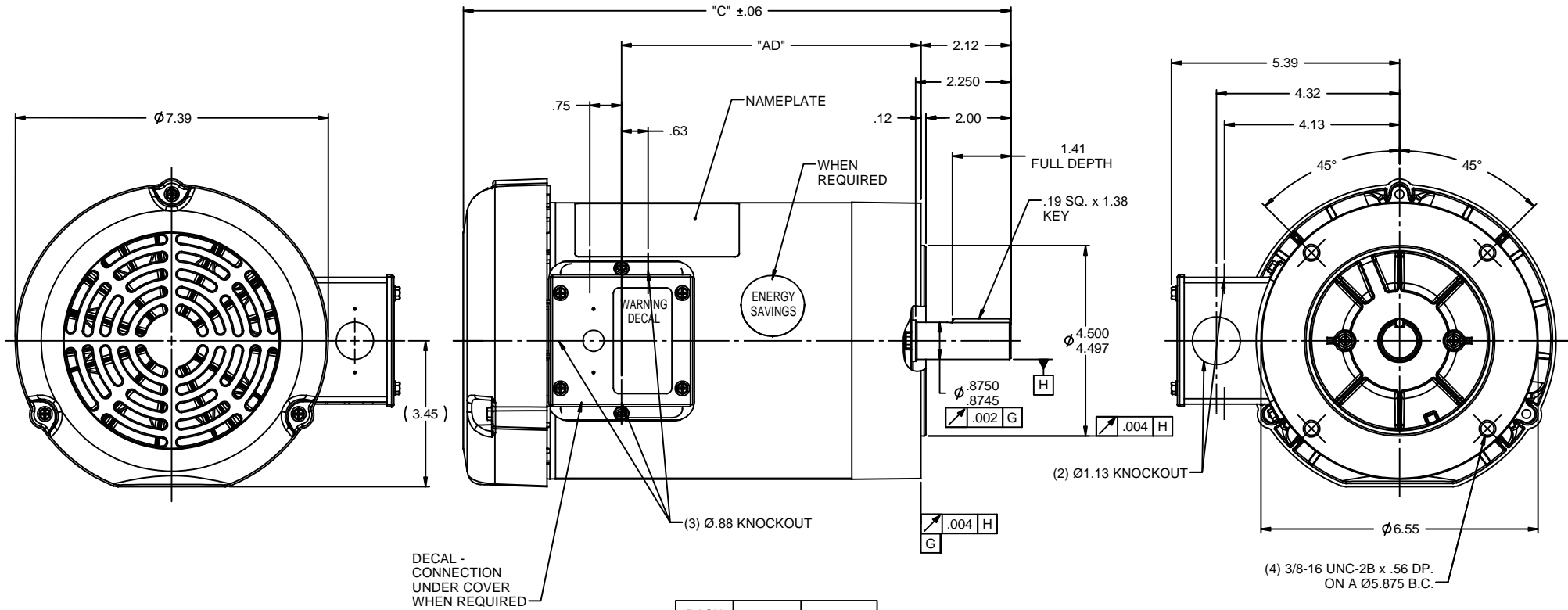


Nameplate Specifications

Output HP	3 Hp	Output KW	2.2 kW
Frequency	60 Hz	Voltage	208-230/460 V
Current	8.8-8.0/4.0 A	Speed	3490 rpm
Service Factor	1.15	Phase	3
Efficiency	86.5 %	Duty	Continuous
Insulation Class	F	Design Code	B
KVA Code	M	Frame	145TC
Enclosure	Totally Enclosed Fan Cooled	Overload Protector	No
Ambient Temperature	40 °C	Drive End Bearing Size	6205
Opp Drive End Bearing Size	6203	UL	Recognized
CSA	Y	CE	Y
IP Code	43		

Technical Specifications

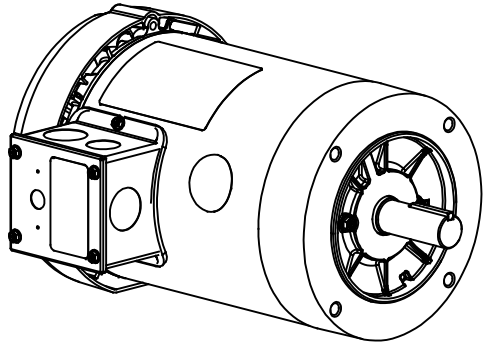
Electrical Type	Squirrel Cage Induction Run	Starting Method	Across The Line
Poles	2	Rotation	Reversible
Mounting	Round	Motor Orientation	HORIZONTAL
Drive End Bearing	BALL	Opp Drive End Bearing	BALL
Frame Material	Rolled Steel	Shaft Type	T
Overall Length	13.92 in	Frame Length	8.00 in
Shaft Diameter	0.875 in	Shaft Extension	2.25 in
Assembly/Box Mounting	F1 ONLY		
Outline Drawing	028777-800	Connection Diagram	005010.01



DECAL - CONNECTION UNDER COVER WHEN REQUIRED

DASH NO.	"C"	"AD"
550	11.42	5.56
600	11.92	6.06
650	12.42	6.56
675	12.67	6.81
700	12.92	7.06
750	13.42	7.56
800	13.92	8.06

NOTE:
1) GASKETS THROUGHOUT



REVISION			BY & DATE	CHK	ANG	±1/2°	FINISH	GENERAL PURPOSE	PAGE	OF
05	ADDED FAN GUARD DIMENSIONS PER SALES	PG	1/5/2011	DEC						
04	ADDED DASH NO. 675	PG	5/21/2010	X						
03	ADDED ENERGY SAVINGS DECAL	PG	5/19/2010	.XX						
02	ADD "C" DIM. PER ISAAC 09-4157	LST	10/1/2009	.XXX						
01	REVISED GD&T POSITIONING & CALLOUT	KMM	8/27/07	.XXX						

TOLERANCES UNLESS SPECIFIED		DRAWN		KMM 08/02/07	
DEC	INCHES	CHK		APP	
X	±.1	APP		SCALE	7:16
.XX	±.03	REF		REF	028504.00
.XXX	±.005	FMF		120038.00	
.XXX	±.0005				
RFP		PREV		SIZE	DRAWING NO
NETWORK FILE NAME 028777				B	028777
				REV	05



ELECTRIC MOTORS
GEARMOTORS
AND DRIVES

TITLE OUTLINE - 140TC FRAME
TEFC - "C" FACE

005010-01

VIEW FROM OUTSIDE OF MOTOR AT SWITCH END.



VOLTAGE	L1	L2	L3	JOIN & INSULATE
HIGH	T1	T2	T3	(T4,T7) (T5,T8) (T6,T9)
LOW	T1,T7	T2,T8	T3,T9	T4,T5,T6

				TOLERANCES UNLESS SPECIFIED		Regal Beloit America, Inc.		DRAWN RDW 04/12/02			
				DEC.	INCHES			CHK			
				.X	±.1			APPD			
				.XX	±.01			SCALE 1=1			
				.XXX	±.005	TITLE		REF FIG.2-51			
A	UPDATED TO REGAL LOGO	SAJ 06/26/15	AJY	.XXXX	±.0005	MAT'L.		FMF			
NO.	REVISION	BY & DATE	CHK	ANG	±1/2"	FINISH		PREV			
THIS DRAWING IN DESIGN AND DETAIL IS OUR PROPERTY AND MUST NOT BE USED EXCEPT IN CONNECTION WITH OUR WORK ALL RIGHTS OF DESIGN AND INVENTION ARE RESERVED THIS IS AN ELECTRONICALLY GENERATED DOCUMENT - DO NOT SCALE THIS PRINT				RFP	04/12/02	CAD FILE		00501001	SIZE	DRAWING NO.	REV.
				DIST		BRF-NLV		A	005010-01	A	



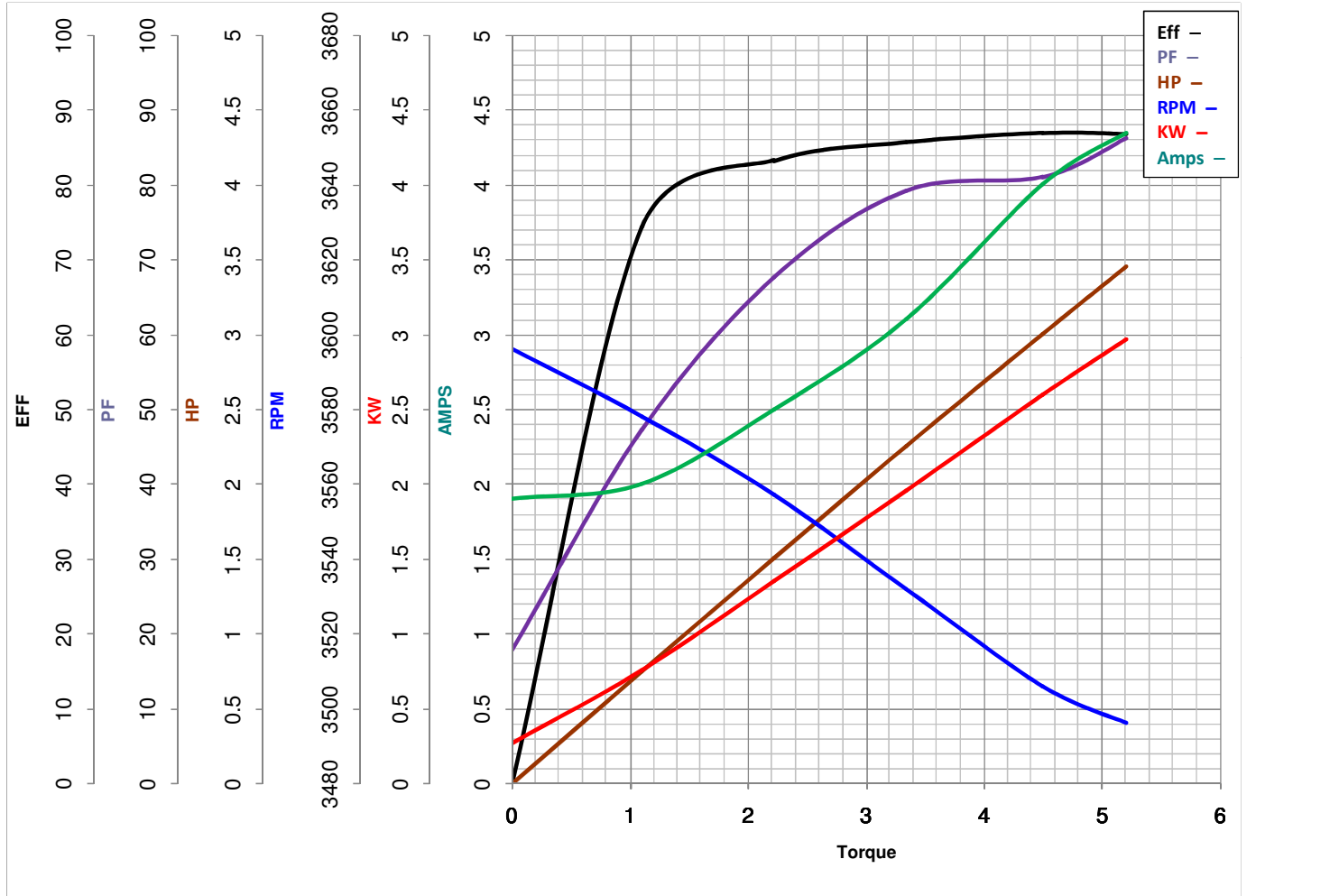
LEESON ELECTRIC CORPORATION
TYPICAL PERFORMANCE CURVE for AC MOTOR

Model No 122171.00

Catalog No 122171.00

Curve at 460 Volts HP 3.00 PHASE 3
60 HZ
3 HP VOLTS 208-230/460

HZ 60 RPM 3490



Torque in Lb.Ft

FL TORQUE 4.5 Lb.Ft
BD TORQUE 20.8 Lb.Ft
LR TORQUE 17.97 Lb.Ft

FL AMPS 8.8-8/4
PU TORQUE 17.5 Lb.Ft
LR AMPS 41

WINDING T632209-3

Date 6/7/2018